



Educational Solutions

Educational Solutions

Services

- **Study for ironmongery** (Scheduling and Hardware Set analysis, Metal Doors specification, Hardware specifications etc.)
- **Study for way-finding** (Scheduling, design etc.)

Products

- **Access Control** (partners with VingCard of ASSA ABLOY.)
- **Ironmongery** (partners with Dormakaba.)
- **Metal Frames and HPL Doors** (partners with SOLECO)
- **Metal Doors – fire rated, acoustic, etc.** (partners with France Metal, Novoferm, Hormann, Fitzpatrick)
- **Movable Acoustic Walls** (partners with Dorma Huppe)
- **Relocatable Partitions** (partners with Optimal)
- **Wall & Door protection** (partners with SPM of Gerflor)
- **Signage/Way-finding** (partners with Vista Systems)
- **Riser Doors – fire rated, clad, etc.** (partners with SELO)

Installation

Our company has third party Certification for the installation of metal doors – issued by IFC. IFC Certification is a UKAS accredited and internationally recognized customer focused independent third-party certification.

Access Control

Antonis Mastris Ltd provides the most advanced access control solutions, offering this way a key-less operation, comfort and safety. Smart, secure and easy to install, combine maximum security and design.



Ironmongery

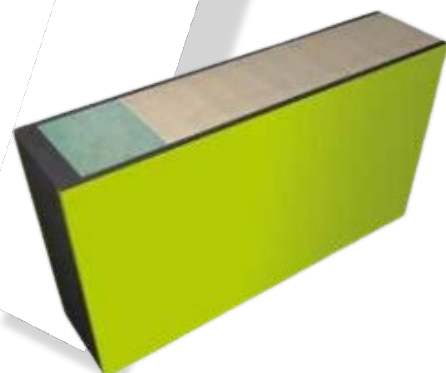
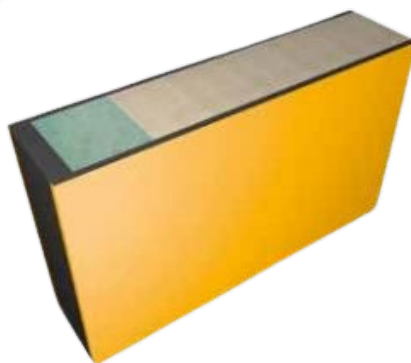
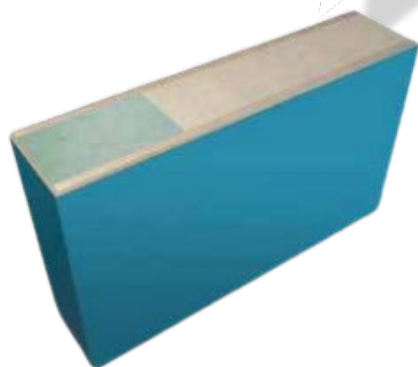
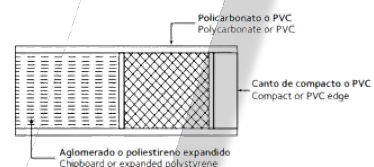
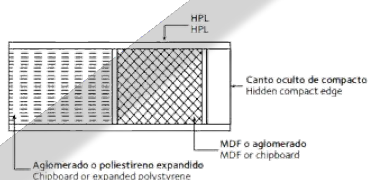
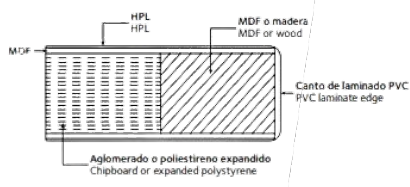
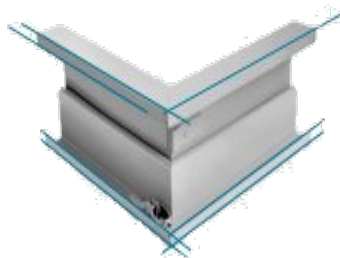
Architectural Ironmongery is a term used for the manufacture and wholesale distributor of items made from iron, steel, brass, aluminium or other metals, including plastics, for use in all types of buildings. The Architectural Ironmongery range includes door handles, closers, locks, cylinder pulls and hinges etc.



Metal Frames and HPL Doors

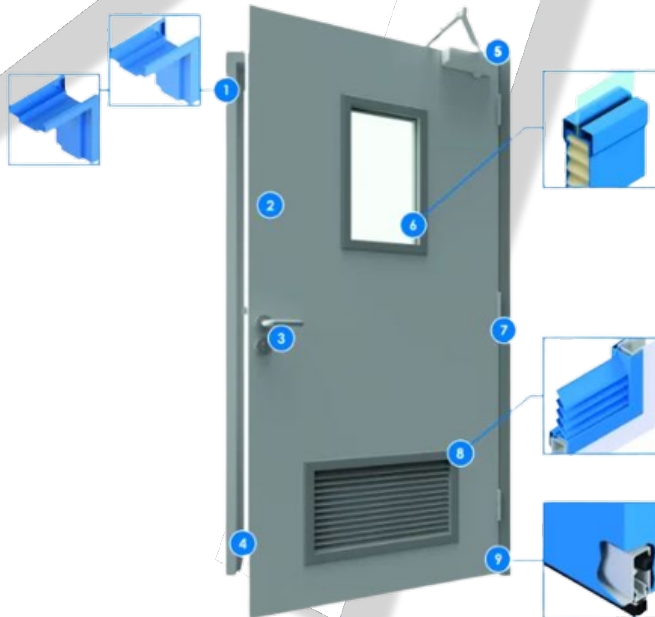
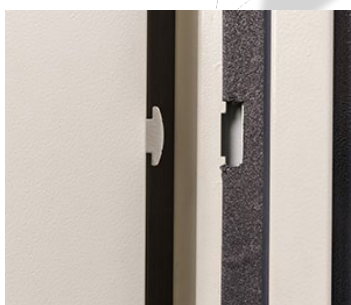
The construction of an educational institute needs to meet a unique set of standards, based on the relevant local or national special requirements and safety rules.

Our company's doors are manufactured to provide design, privacy and safety.



Metal Doors

Our company specializes on fire & smoke resistant metal doors for internal and external use. The range of the fire resistance can be from 30 to 120 minutes. All metal doors can be either “E” or “EI”.



Dorma Huppe

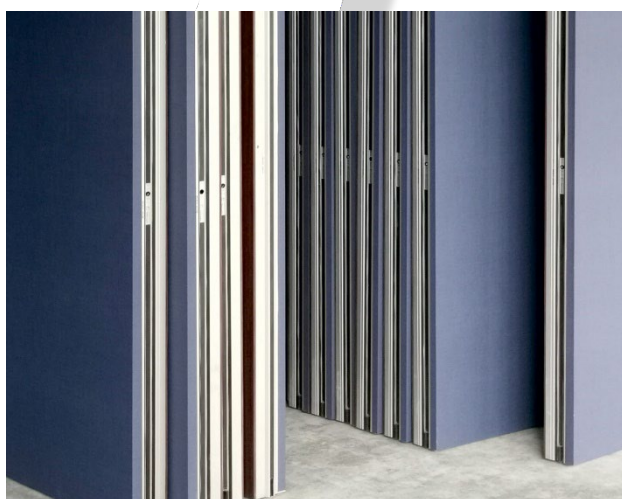
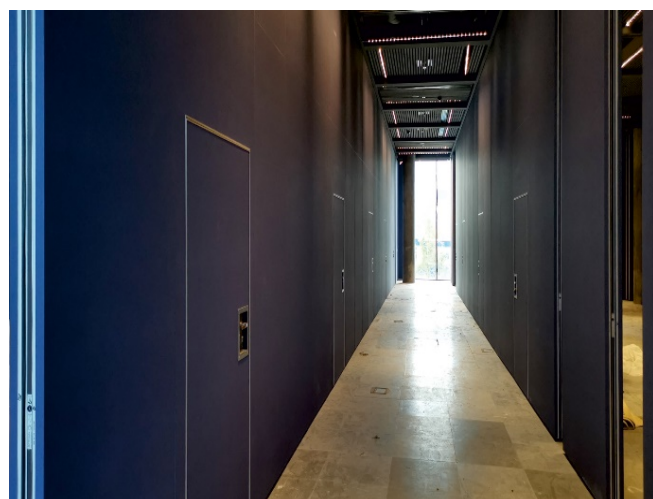
Movable Acoustic Walls

Our company provides movable walls for schools, music classrooms, amphitheatres etc. Movable walls combine elegance and comfort as they can also have high acoustic and fire resistance. Depending on the model, they can be stacked, folded or on wheels enabling mobility and ease of storage.



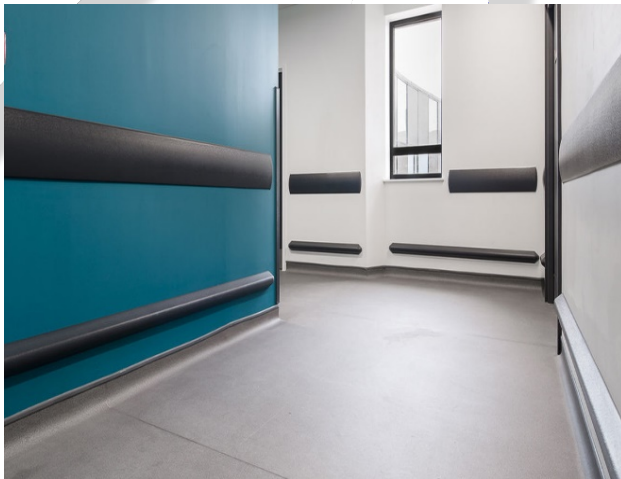
Relocatable Partitions

Relocatable partitions are forms that serve to divide a building's room and they can be joined together section by section or as one unit. They are providing privacy and noise reduction.



Wall and Door protection

Our company offers a wide range of wall and door protections especially for intensive high traffic areas such as schools, class rooms, amphitheatre etc. A combination of protection and decoration fitting in all areas by providing high level of safety and a decorative touch.



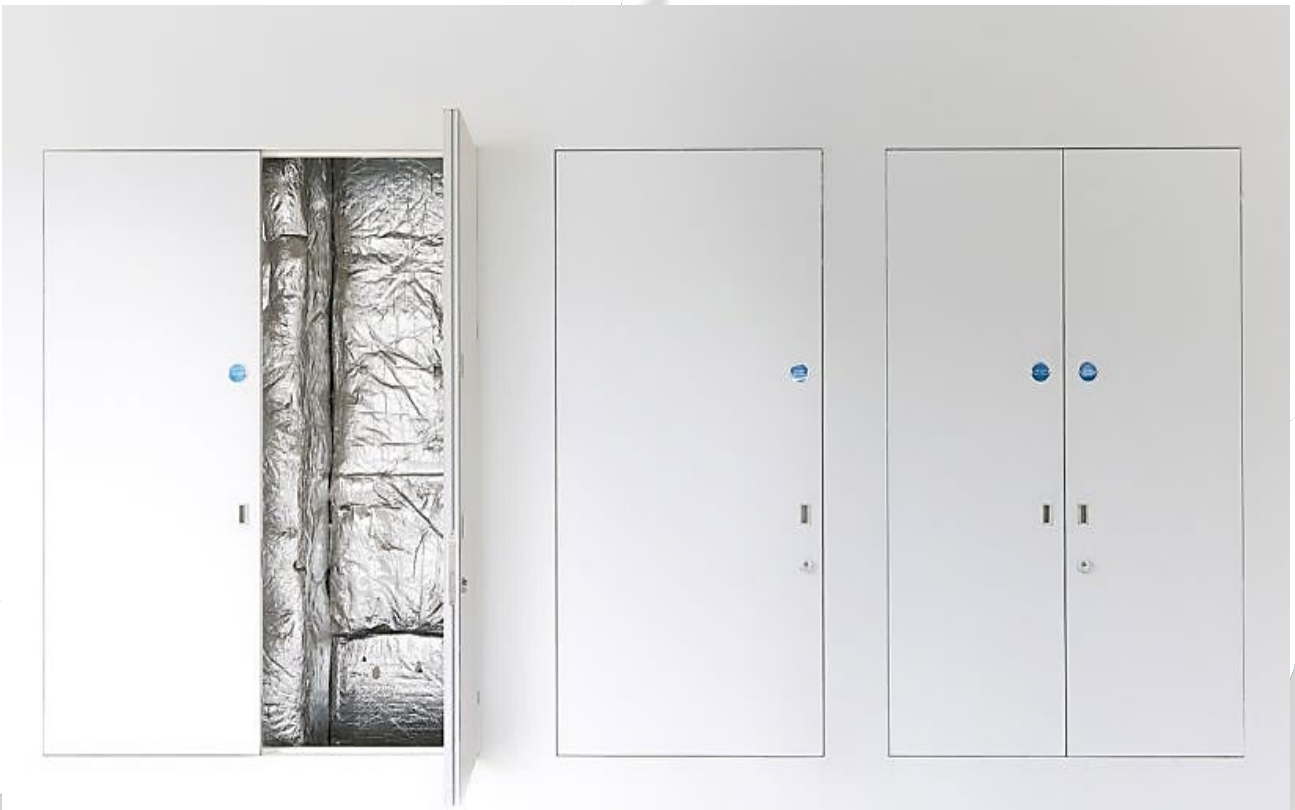
Vista System

Signage and way-finding system is the system that guides people in the right direction and helps them understand the conformation of an area.



Riser Doors

Riser door systems are elegant, frameless, high performing riser doors, which allow you to create a flush seamless finish. They can be fire rated and insulated.



Antonis Mastris Ltd

Neas Ionias 1, Aradippou
Industrial Area, Larnaca,
Cyprus.

Tel.: +357-24-533683

Fax: +357-24-531594

e-mail: info@mastris.com

website: www.mastris.com

[Scan for more](#)

