

# Pylon

## Vista series, Double Sided style



Vista's convex pylon is built of Vista's double sided VBS profiles and a range of bases and end caps. The sign, that can have a permanent or a portable application, uses standard graphic substrates.

### **Dimensions:**

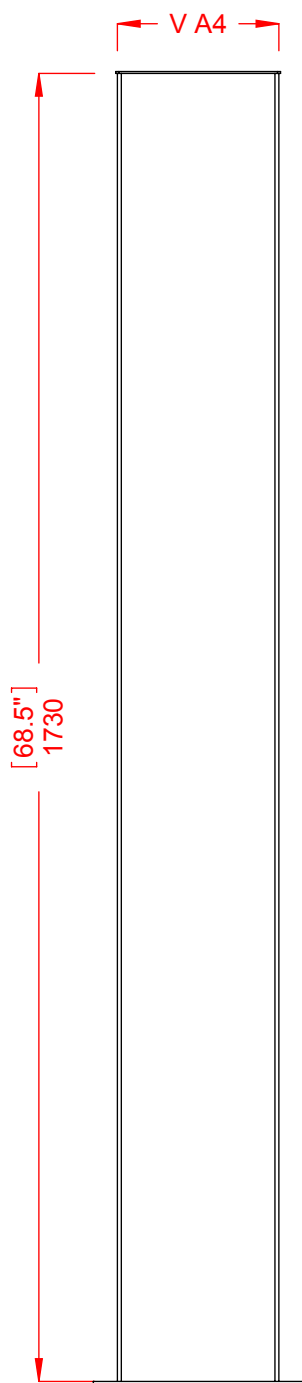
Vista double sided pylon frames are offered in 14 different widths:

8.27", 8.5", 11.69", 14", 15.59", 16.54", 19.59", 23.43", 27.56", 31.5", 35.43", 39.37", 43.3", 47.24"

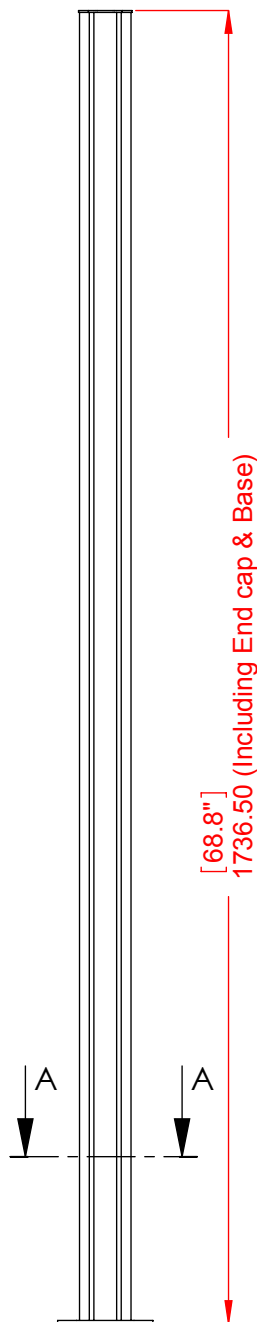
(V-A4, V-Letter, V300, V14, V400, V420, V500, V600, V700, V800, V900, V1000, V1100, V1200 (mm))

Length: 56"- 84.2" (1433 mm – 2133 mm)

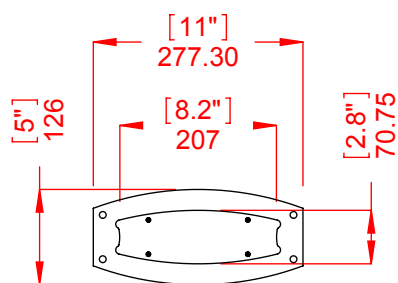
Custom lengths are available.



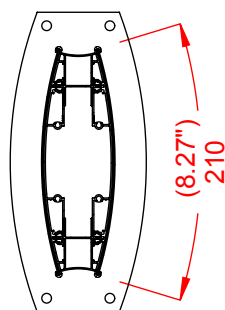
Front view



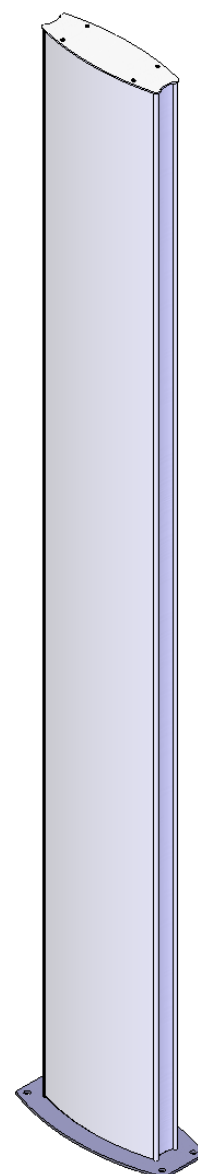
Side view



Top view



Section A-A



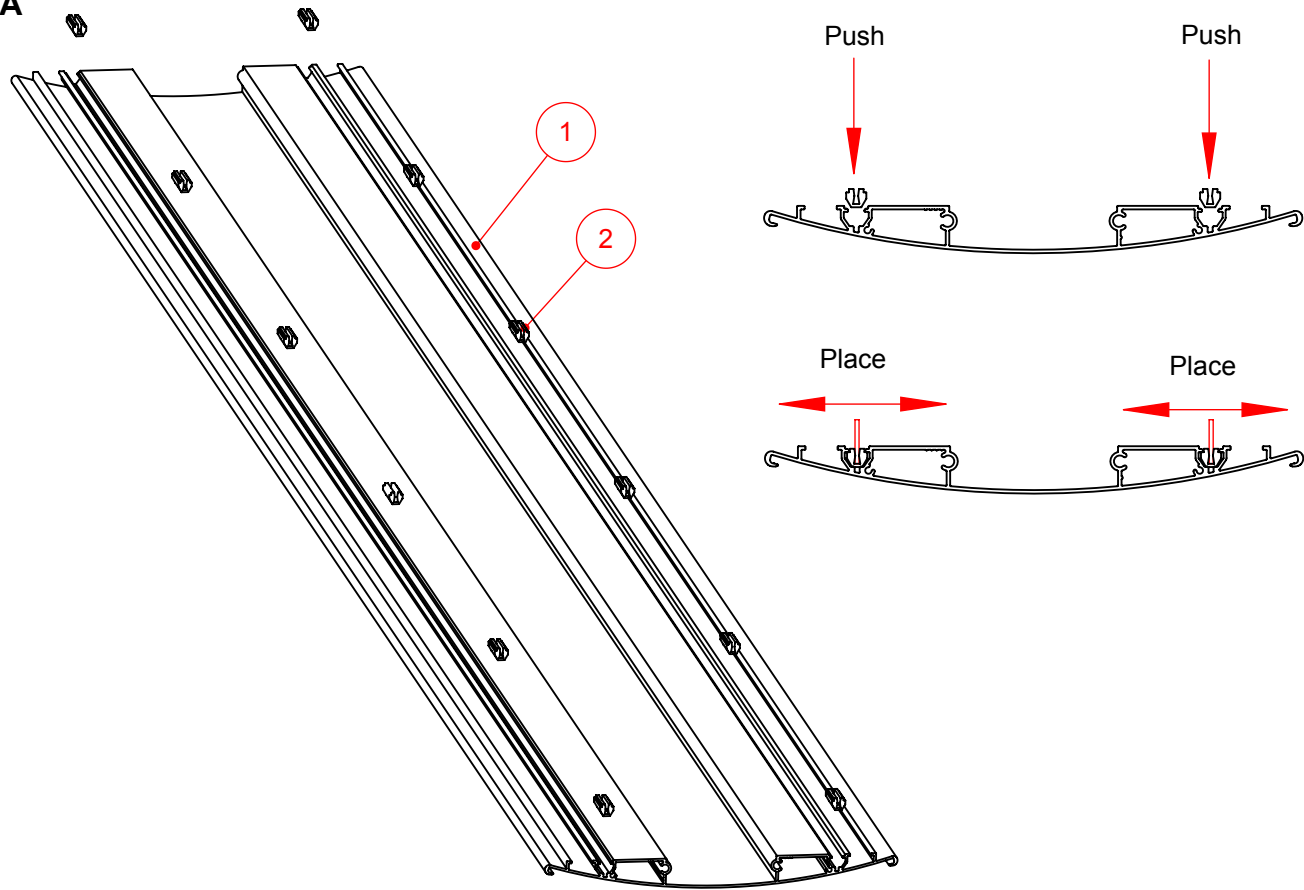
Isometric view



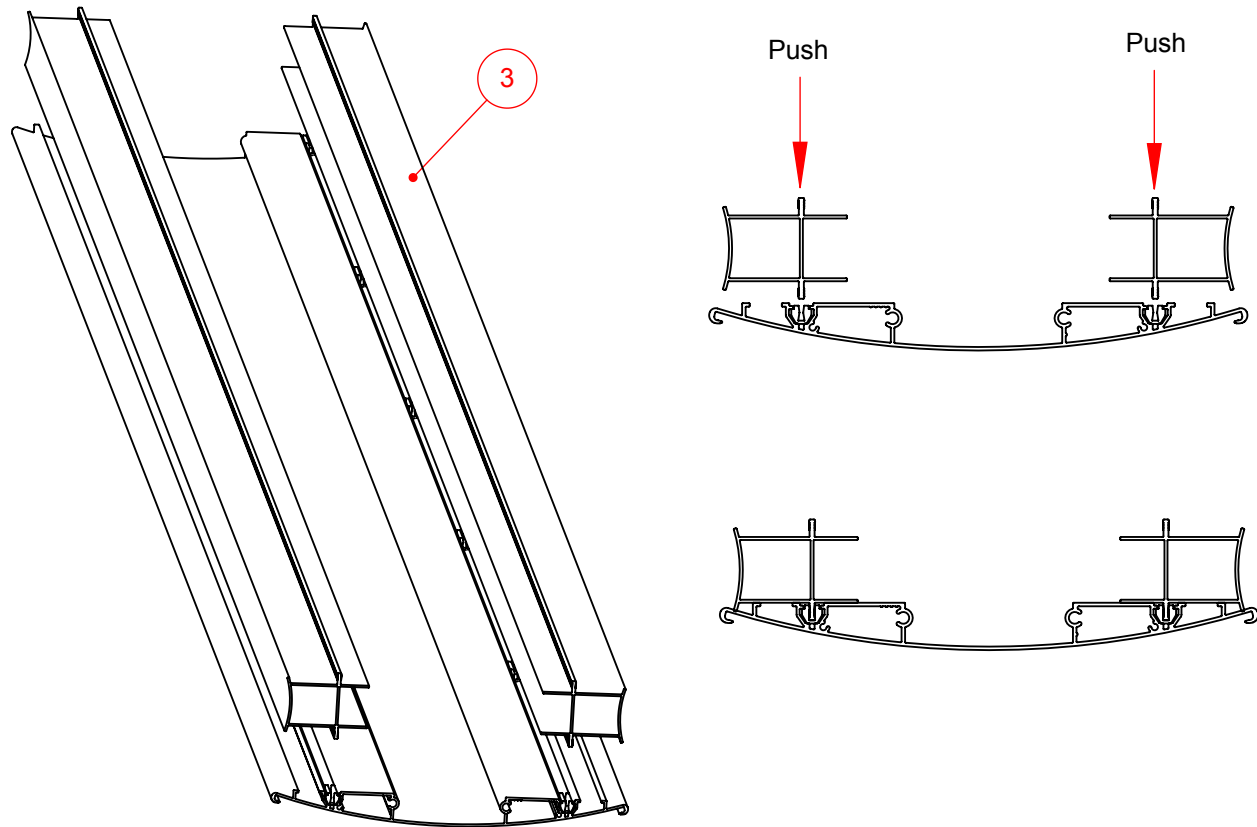
Product Families	Double sided pylon	Designer: Ravit Cohen
Model	Double sided pylon- Wide design	Date: 27/1/2008
Catalog P/N	DSW2	Measurements in millimeters. Measurements have been rounded upwards to the near decimal point.

**Proprietary and confidential:** The information contained in this drawing is the sole property of Techsign advanced sign systems LTD (manufacturer of Vista system). Any reproduction; copying; distribution or any other use in part or as a whole without the written permission of Techsign is prohibited. This ban includes any use by any third party that did not receive this information from Techsign advanced sign systems LTD.

Step A

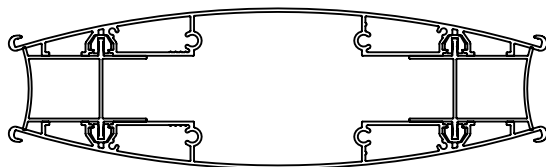
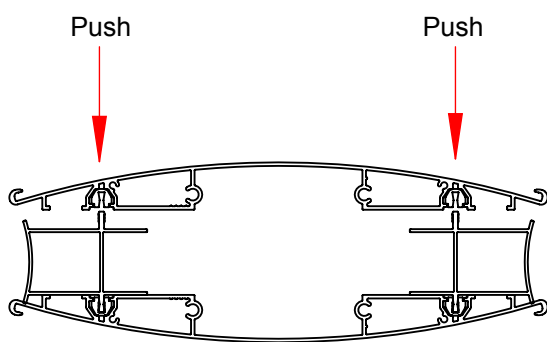
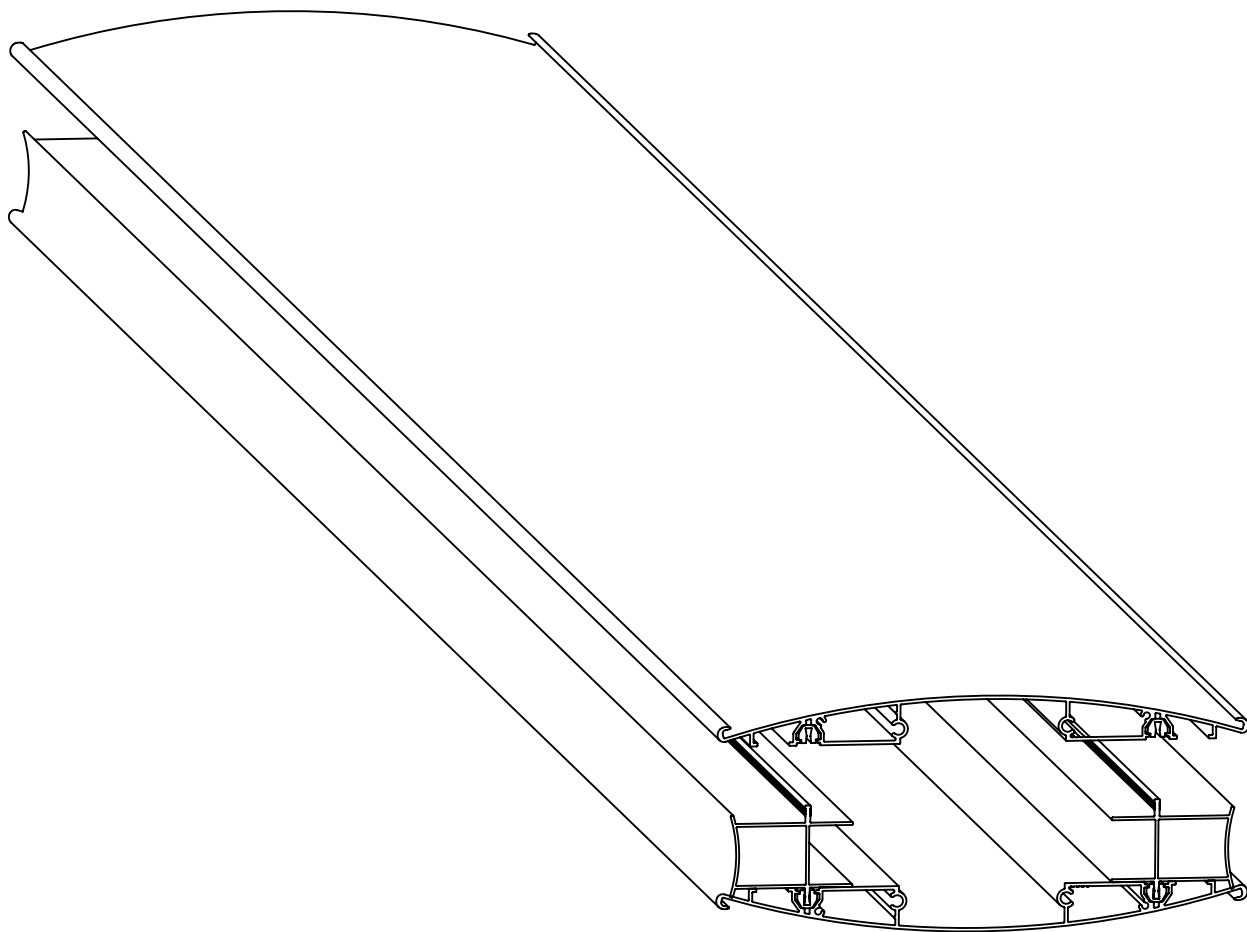


Step B



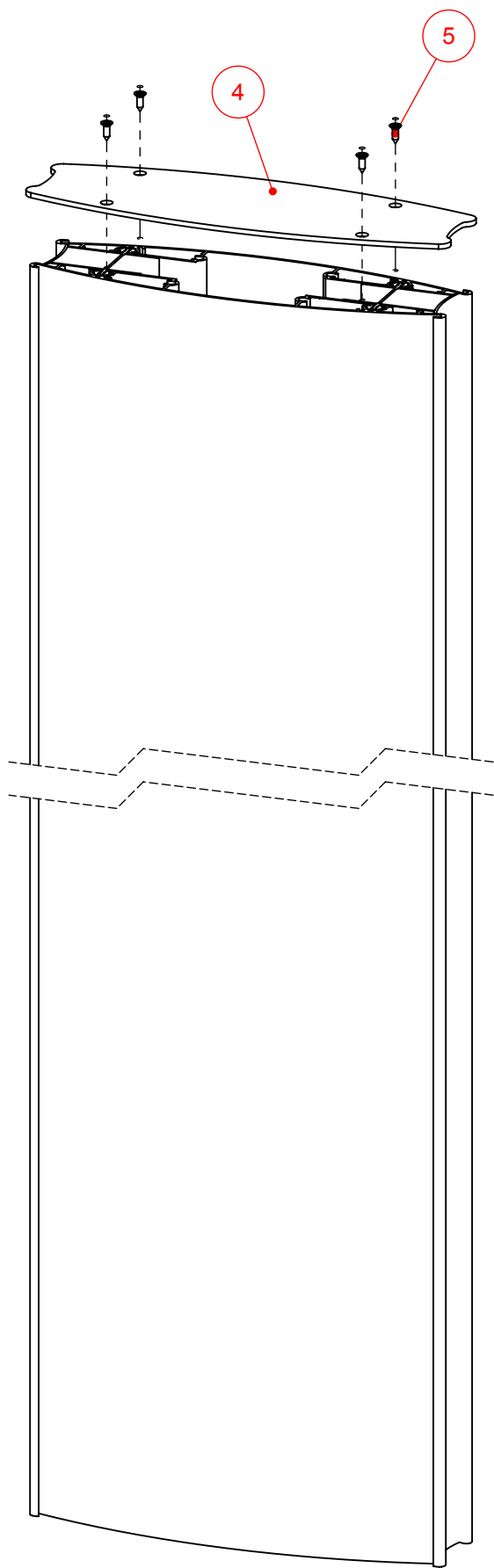
Product Families	Double sided pylon	Designer: Ravit Cohen
Model	Double sided pylon- Wide design	Date: 27/1/2008
Catalog P/N	DSW2	Measurements in millimeters. Measurements have been rounded upwards to the near decimal point.
<b>Proprietary and confidential:</b> The information contained in this drawing is the sole property of Techsign advanced sign systems LTD (manufacturer of Vista system). Any reproduction; copying; distribution or any other use in part or as a whole without the written permission of Techsign is prohibited. This ban includes any use by any third party that did not receive this information from Techsign advanced sign systems LTD.		

Step C

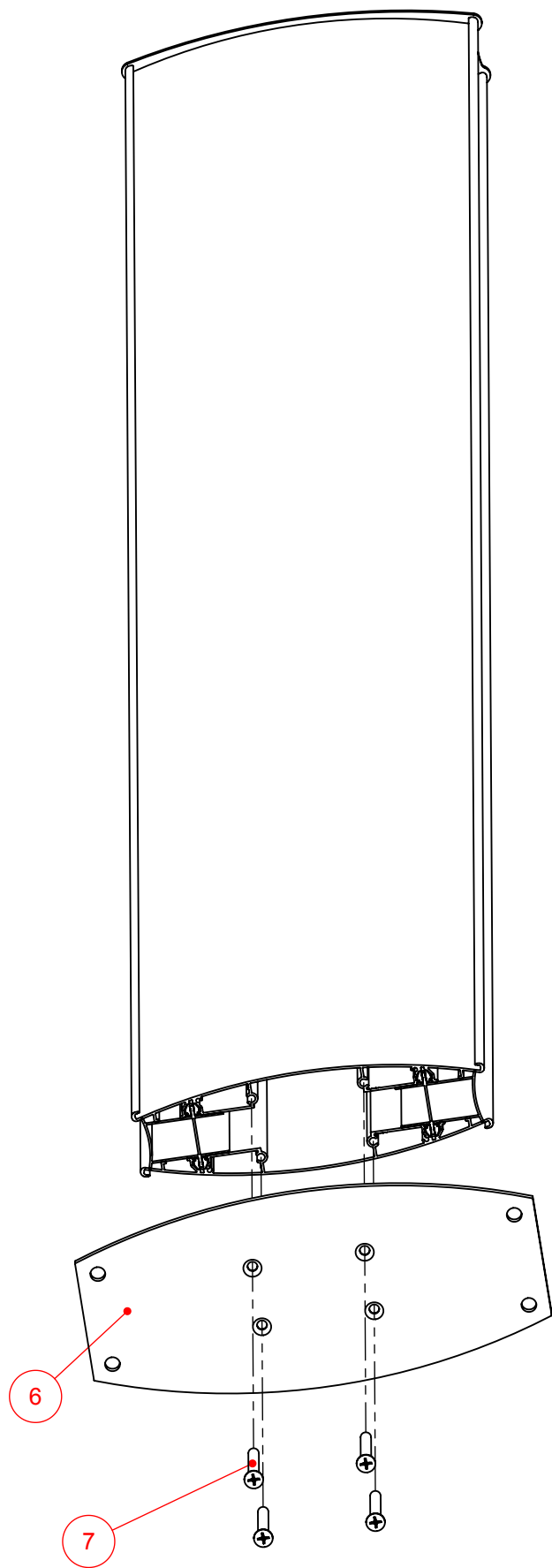


Product Families	Double sided pylon	Designer: Ravit Cohen
Model	Double sided pylon- Wide design	Date: 27/1/2008
Catalog P/N	DSW2	Measurements in millimeters. Measurements have been rounded upwards to the near decimal point.
<b>Proprietary and confidential:</b> The information contained in this drawing is the sole property of Techsign advanced sign systems LTD (manufacturer of Vista system). Any reproduction; copying; distribution or any other use in part or as a whole without the written permission of Techsign is prohibited. This ban includes any use by any third party that did not receive this information from Techsign advanced sign systems LTD.		

Step D

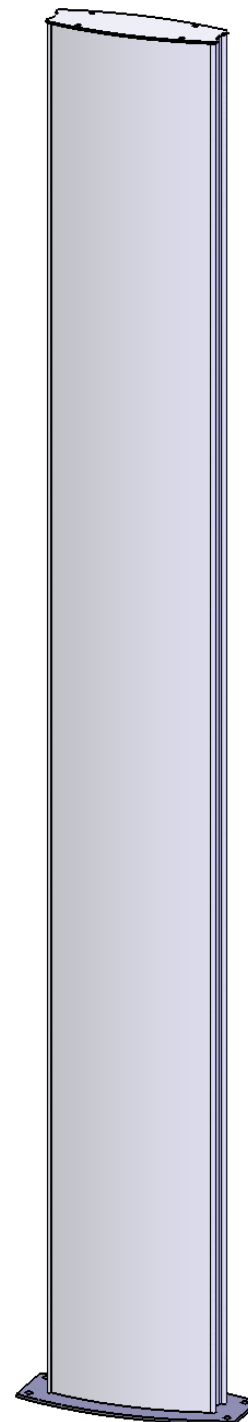
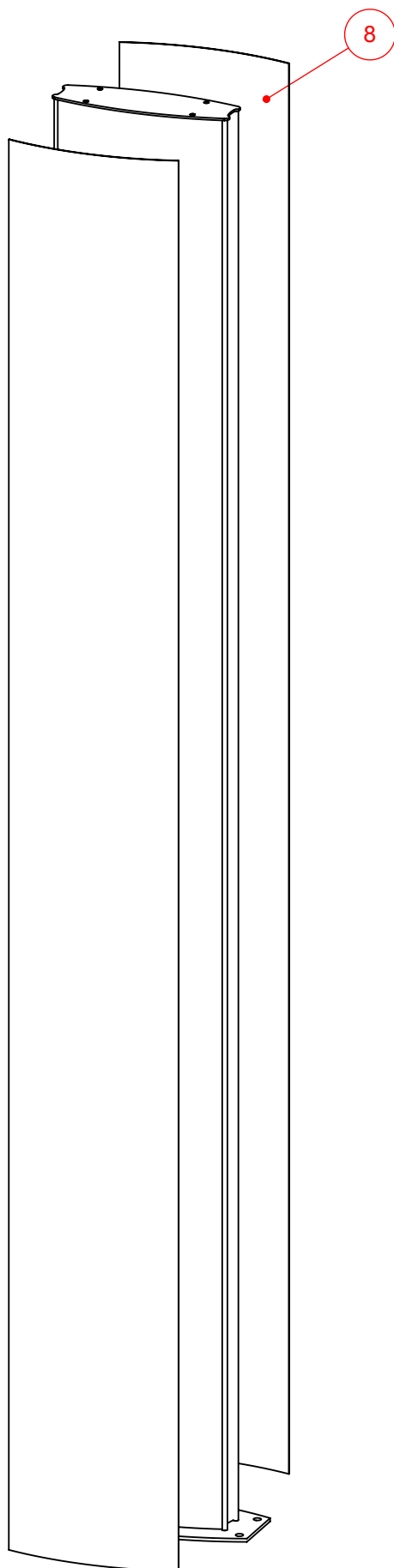


Step E



Product Families	Double sided pylon	Designer: Ravit Cohen
Model	Double sided pylon- Wide design	Date: 27/1/2008
Catalog P/N	DSW5SA	Measurements in millimeters. Measurements have been rounded upwards to the near decimal point.
<b>Proprietary and confidential:</b> The information contained in this drawing is the sole property of Techsign advanced sign systems LTD (manufacturer of Vista system). Any reproduction; copying; distribution or any other use in part or as a whole without the written permission of Techsign is prohibited. This ban includes any use by any third party that did not receive this information from Techsign advanced sign systems LTD.		

## Step F



Isometric view

ITEM NO.	PART NUMBER	QTY.
1	VA4	2
2	CWE	
3	PS30	2
4	DSECA4S	1
5	TS438	4
6	BA4S	1
7	TS142	4
8	CCA4	2



Product Families	Double sided pylon
Model	Double sided pylon- Wide design
Catalog P/N	DSW2

Designer: Ravit Cohen

Date: 27/1/2008

Measurements in millimeters. Measurements have been rounded upwards to the near decimal point.

**Proprietary and confidential:** The information contained in this drawing is the sole property of Techsign advanced sign systems LTD (manufacturer of Vista system). Any reproduction; copying; distribution or any other use in part or as a whole without the written permission of Techsign is prohibited. This ban includes any use by any third party that did not receive this information from Techsign advanced sign systems LTD.